



# GMT MONTHLY MEMBERSHIP PROGRESS REPORT

Results as of: 4/30/2017

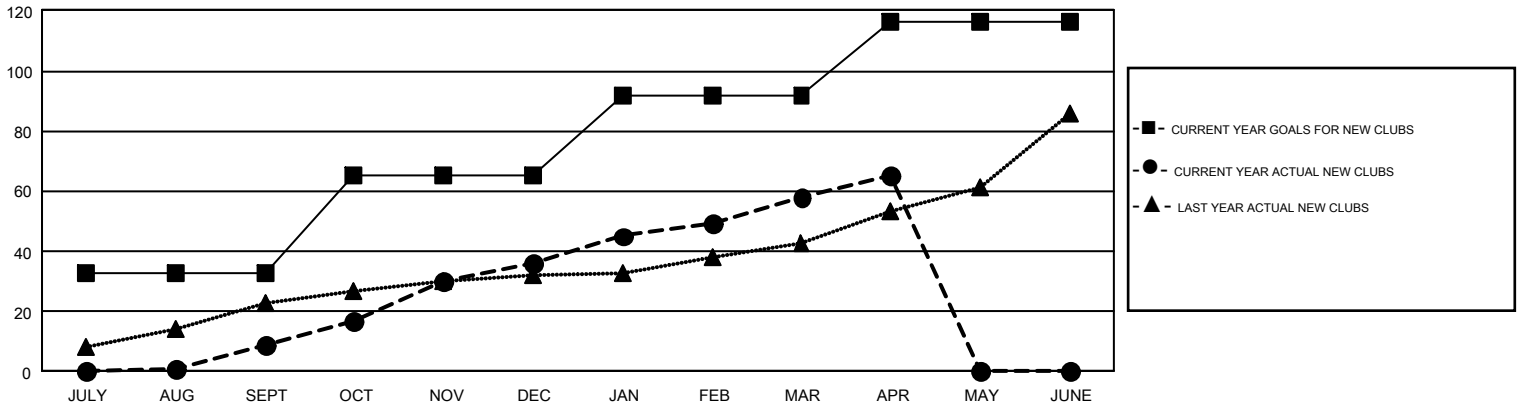
## GMT Constitutional Area 6-Africa

REPORT DOES NOT INCLUDE CLUBS IN UNDISTRICTED AREAS.

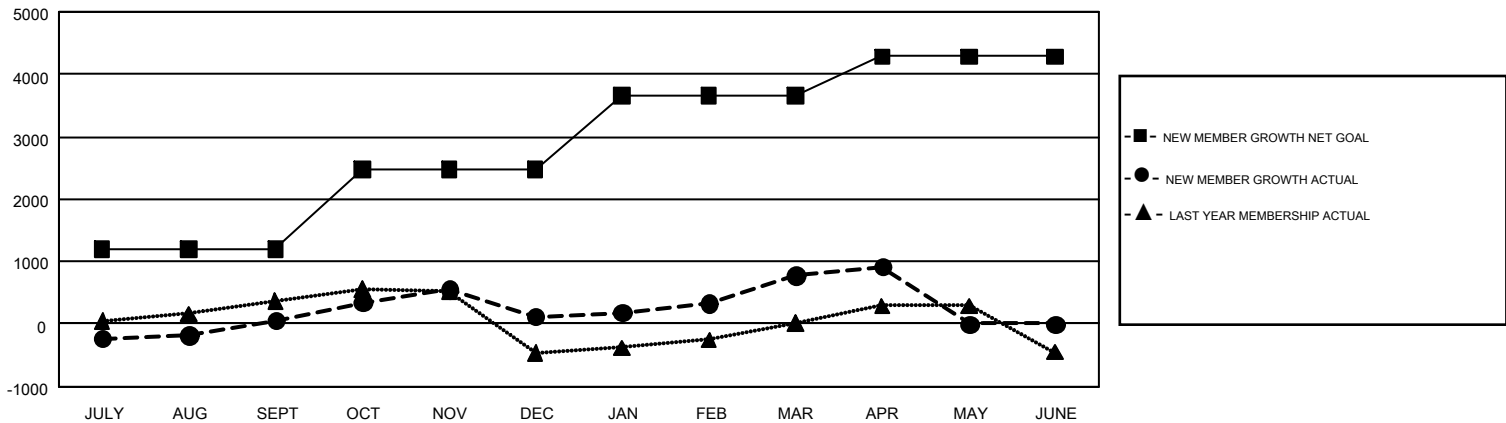
Clubs			
RESULTS FOR 2016-2017			
QUARTER	NEW CLUB GOAL	NEW CLUBS	DROPPED CLUBS
JULY/AUG/SEPT	33	9	7
OCT/NOV/DEC	32	27	18
JAN/FEB/MAR	27	22	30
APR/MAY/JUNE	24	7	3

Members			
RESULTS FOR 2016-2017			
QUARTER	NEW MEMBER GROWTH NET GOAL (not reinstated or transfers)	NEW MEMBER GROWTH ACTUAL (not reinstated or transfers)	DROPPED MEMBERS ACTUAL (including transfers)
JULY/AUG/SEPT	1,193	947	890
OCT/NOV/DEC	1,277	1,737	1,675
JAN/FEB/MAR	1,186	1,960	1,292
APR/MAY/JUNE	626	520	388

GOALS AND ACTUAL NEW CLUBS CUMULATIVE



GOALS AND ACTUAL MEMBERS CUMULATIVE



DROPPED CLUBS: 58	836 CLUBS OF 1,341 ADDED 1 OR MORE NEW MEMBERS	<u>GENDER DISTRIBUTION</u>	
DROPPED MEMBERS		MALE	18,454 (62.44%)
DECEASED	117	FEMALE	11,102 (37.56%)
CLUB CANCELLED	1,082	TOTAL FAMILY UNIT MEMBERS	3,390
OTHER	3,045	FAMILY MEMBERS PAYING HALF DUES	1,828
TOTAL	4,244		

[CLICK HERE FOR CUMULATIVE MEMBERSHIP DATA](#)